



**Bryan Bishop**  
*and partners*

**Bury Lane**  
**Hertford, SG14 2QL**

# Bury Lane

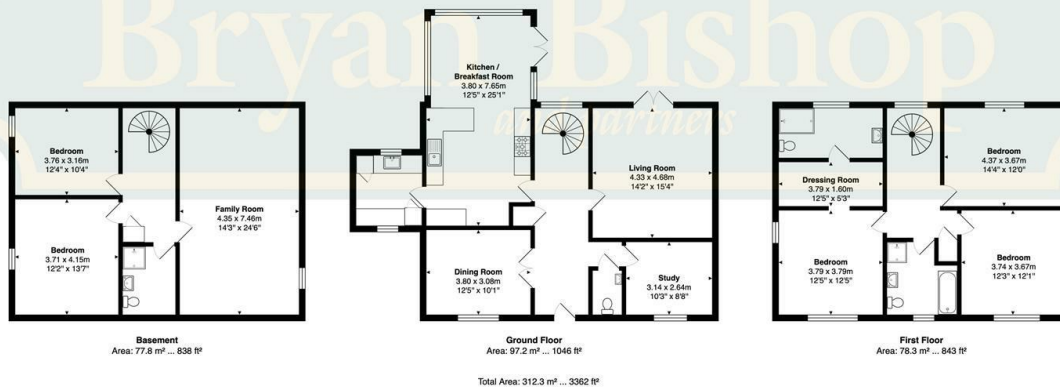
## Hertford, SG14 2QL

### Summary

#### Summary:

Bryan Bishop & Partners are delighted to bring to the market this exceptional country house complete with substantial grounds set within the idyllic Hertfordshire village of Bramfield. The property is blessed with underfloor heating built into the concrete floors, five bedrooms and three bathrooms arranged over three generously proportioned levels of the main house plus a self-contained studio apartment with kitchenette and shower room built above the detached double garage/workshop. This is a very special house indeed, constructed just fifteen years ago in an entirely appropriate farmhouse style it effortlessly combines the traditionally conceived exterior with a completely contemporary and luxuriously appointed modern interior so that it comfortably and sympathetically occupies its rural village setting yet also meets the modern day to day life needs of any busy family. The current owners also rent additional land from a local landowner, which may be available to the purchaser if so desired.





Energy Efficiency Rating		
	Current	Potential
Very energy efficient - lower running costs		
(92 plus) <b>A</b>		
(81-91) <b>B</b>		
(69-80) <b>C</b>		
(55-68) <b>D</b>	66	74
(39-54) <b>E</b>		
(21-38) <b>F</b>		
(1-20) <b>G</b>		
Not energy efficient - higher running costs		

England & Wales E.U. Directive 2002/91/EC



**Bryan Bishop**  
*and partners*

6a High Street | Welwyn | AL6 9EG | 01438 718877 | [info@bryanbishop.co.uk](mailto:info@bryanbishop.co.uk) | [www.bryanbishop.co.uk](http://www.bryanbishop.co.uk) Find us on

